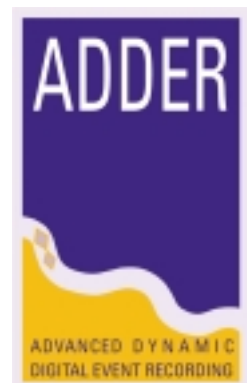


ADDER DVR

Digital Video Recording System

Operation Guide



V26.7
<http://www.adder-dvr.com>

The Main Screen



System default has the corresponding number of camera, 4, 8, 16 or 32. After you connect the video signal to the system, you will get the above screen when your system switches on the first time.

Mouse pointer over the display of one video camera –

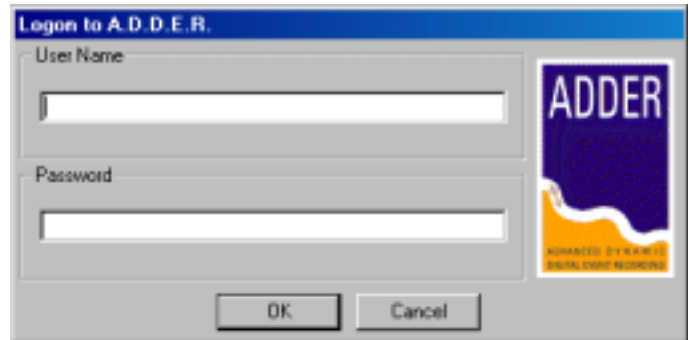
Left mouse click - activate the Hawk Viewer 2000 to playback the recorded video of corresponding camera. For Hawk Viewer 2000 operation, please refer to another manual.

Right mouse click - activate the full screen mode

Over the screen of full screen mode, press mouse right button and click the “hide preview” will close the preview screen and return to the main screen. Please note that the preview mode will make the system performance lower. It is designed for full screen display only when necessary, should be closed normally.

Switch Off Procedure

1. Press the key "SPACE BAR"
2. Mouse left click "Log On"
3. Enter user : "1133"
password : "332211" , press "OK"
4. Mouse left click "Change Mode"
5. Mouse left click "Shut Down System"
6. Mouse left click "Yes"



Switch On Procedure

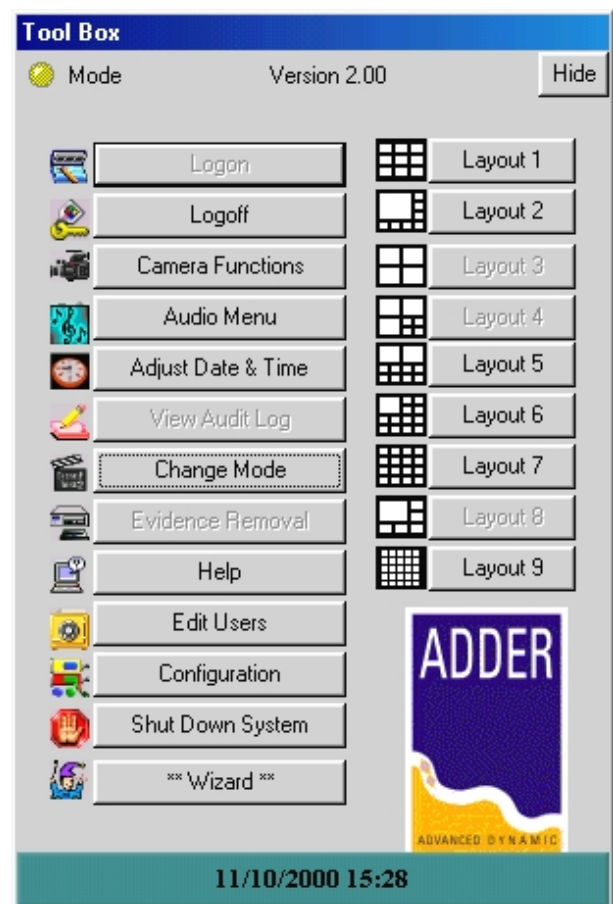
1. Make sure the VGA display monitor is on
2. Open the front panel using the key
3. Press the On/Off switch once, and make sure the green light on.

Screen Layout Selection

1. Press the space bar
2. Mouse left click the preferred layout
3. Press "Hide" button
4. Totally 9 layouts can be selected

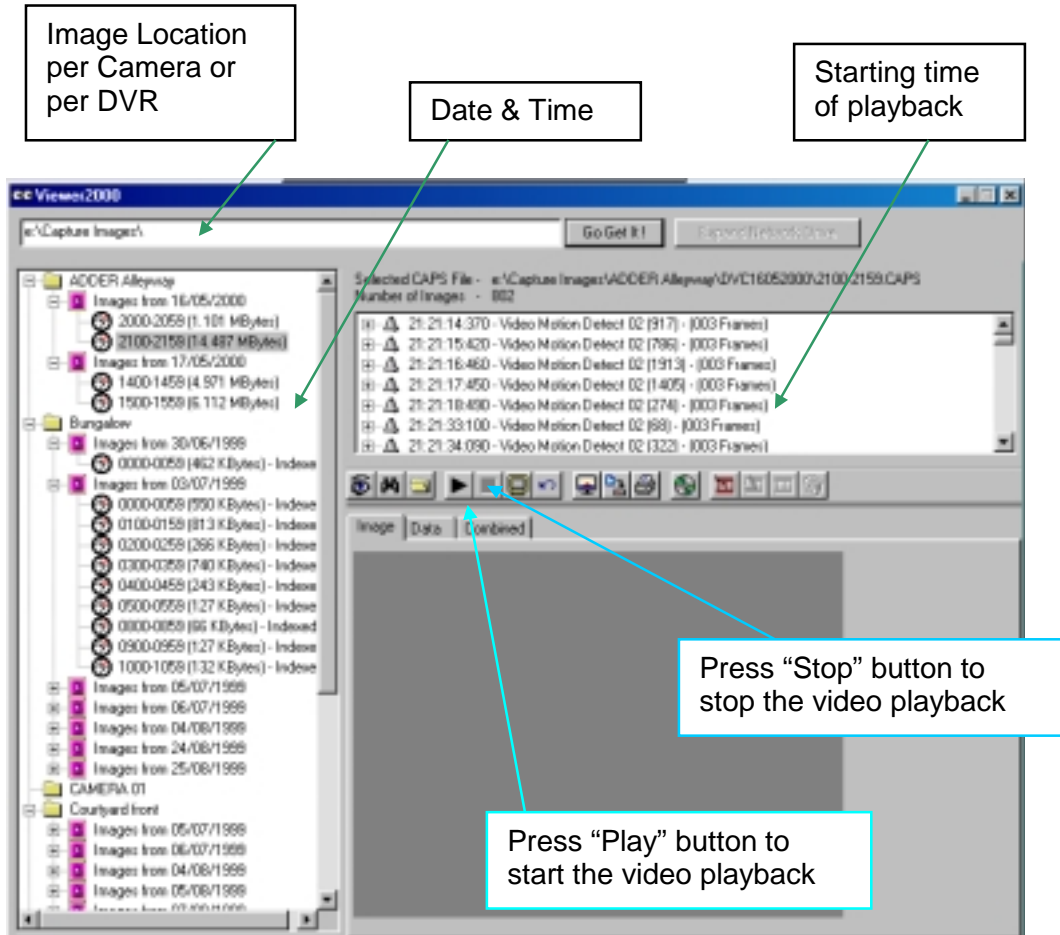
Full Screen Display

1. Point to the selected camera
2. Mouse right click
3. Full screen of corresponding camera is displayed
4. Mouse right click, "Hide View" is displayed
5. Mouse left click "Hide View" to return to split screen display



Playback

1. Mouse point to the camera screen for playback of corresponding recorded video, and mouse left click
2. Playback screen is then popped out



View Selected Image



Auto View Selected Image



Expand all Events



Auto Play the images from the Selected Image



Stop Auto Play



Auto Play on Full Screen



Auto Play Continuously



View Selected Image Full Screen



Save Selected Image, as JPEG or Bitmap



Print Selected Image



Save this hour images to an external drive for evidence

Playback of another DVR

The location can be entered in various formats :

Standard Format for local playback

D:\Imagexxx\

e.g. D:\Image122\Camera01\

Network Path Format for remote playback

Enter [\\HSBCxxx\](#)

The number of 3 digits xxx is different in different Adder DVRs.

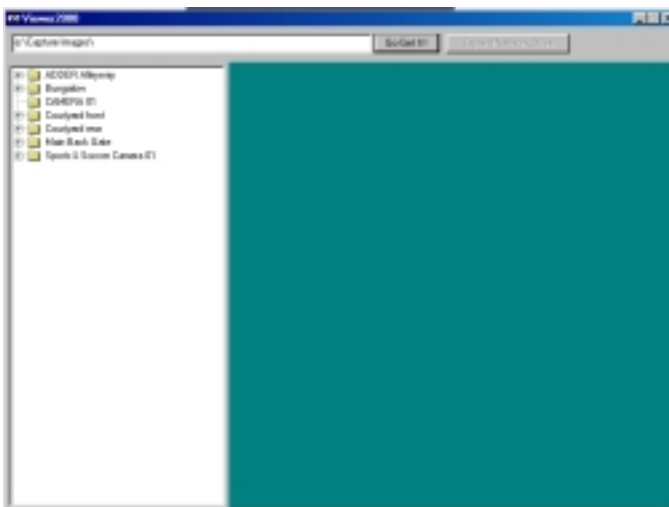
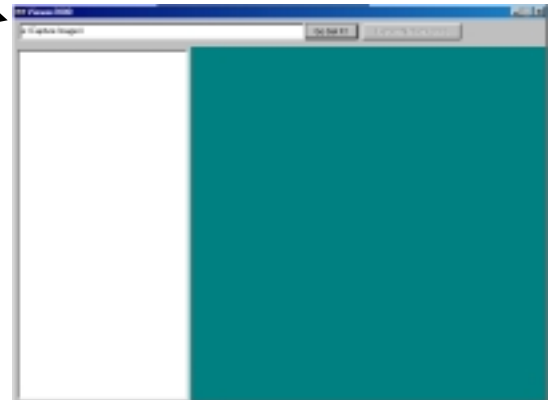
And press “Go Get It”, Adder Viewer will try to find out the Adder DVR with the code in the network.

Once the [\\HSBCxxx\](#) was shown in the left had side, click “Expand Network Drive”, and a list of networked Hawk Drive can be found.

Click the Captured Image folder, a list of cameras will be shown. And select the camera to be playback.

Once you have entered the path press the “Go Get It !” button.

Wait while the Viewer2000 searches the given location for Images.



Once the search is complete, all the folders within the given location are displayed.

Any Folder with a '+' symbol to the left of its name has Folders below it. Click the '+' symbol with the left mouse button to expand the Folder.

Backup of Images for Evidence



If it is required to make a copy of the Events/Images from any selected hour onto a removable hard disk or CD. Then the 'Save this hours images to an external drive for evidence' button should be used.

There are various steps to this procedure. Firstly the selected file is displayed along with the size of the file.



Next select the destination drive from the list and press the 'Select Drive' button.

The full path and file name will now be automatically generated and displayed. If this is acceptable tick the 'Yes, this is OK!' box, located underneath the path.

Finally press the 'Transfer Evidential Images now' button.



A progress window will be displayed, showing the time remaining for the copy.

Once the file has been copied you have the option of copying the Viewer2000 program files to the disk also. This would all the removable hard disk or CD to be used in any MS Windows based PC.

Back up of selected video into the CD-R disc

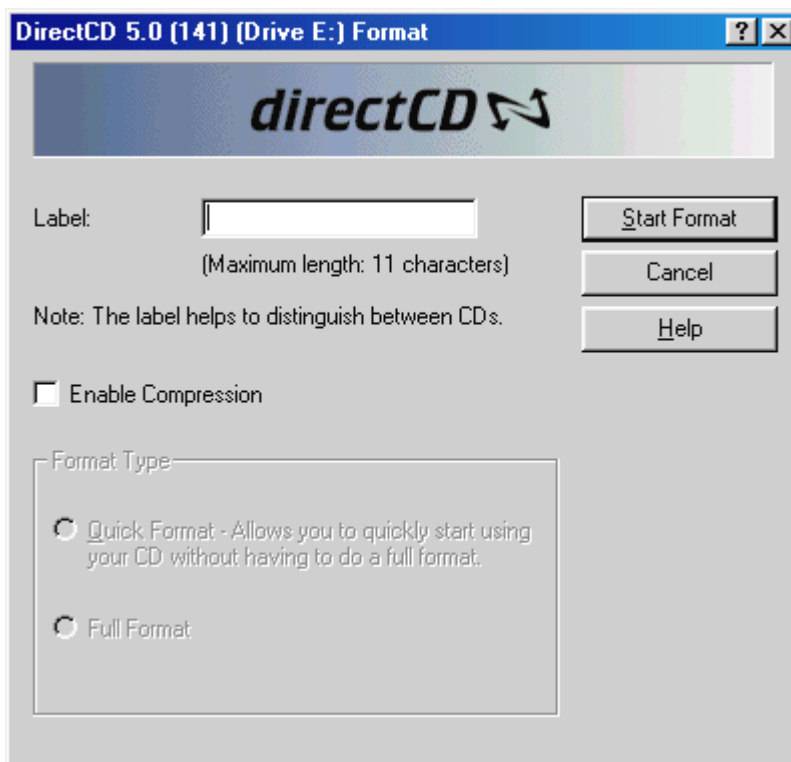
1. Getting a blank CD-R Disc ready

Insert new disc and press right sided windows key (between right-sided “Alt” and “Ctrl” keys).

The following window task bar should appear.

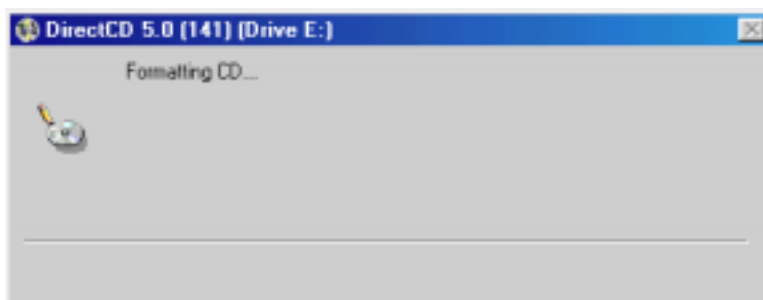


Point and right-click the CD icon, and select the “format” option. Welcome screen pops up.



Fill up the label e.g. evidence CD, and press “Start Format”.

The next Window appears.



2. Selecting the video hour for backup

Automatically go back to main screen after formatting.

Activate the Adder Viewer 2000 by right mouse button click over the screen of selected camera on main screen.

Backup of Images for Evidence by clicking the icon



If it is required to make a copy of the Events/Images from any selected hour onto a CD-R, click 'Save this hours images to an external drive for evidence' button should be used.

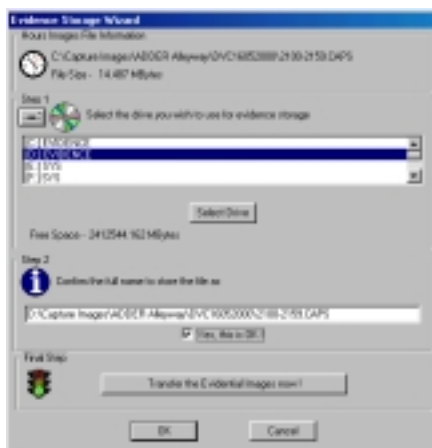
There are various steps to this procedure. Firstly the selected file is displayed along with the size of the file.



Next select the destination CD-R drive from the list and press the 'Select Drive' button.

The full path and file name will now be automatically generated and displayed. If this is acceptable tick the 'Yes, this is OK !' box, located underneath the path.

Finally press the 'Transfer Evidential Images now' button.

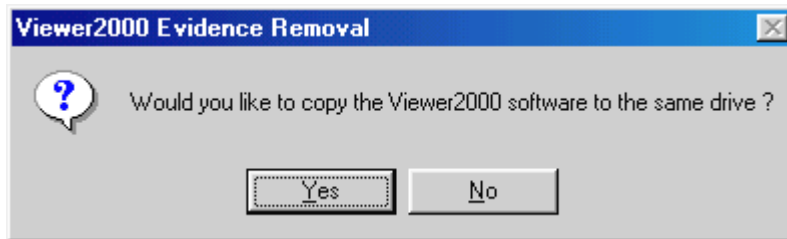


A progress window will be displayed, showing the time remaining for the copy.

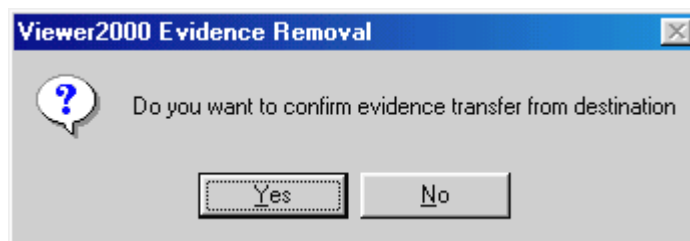
Once the file has been copied you have the option of copying the Viewer2000 program files to the disk also. This would allow the CD-R to be used in any MS Windows based PC.

Note that the CD-R back up is not finished yet until the eject procedure is completed as follows.

3. Confirmation of video writing



Press “**Yes**” to confirm the copy of Viewer2000 software into the CD-R, such that the video can be playback in other PC with CD-ROM.



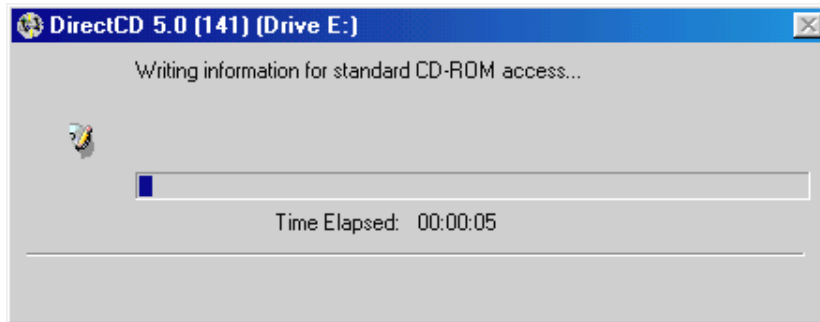
Press “**No**”. There is no need to confirm the transfer while the system itself will automatically check this. This feature is only for other storage media.

4. Ejecting and final writing of CD-R disc

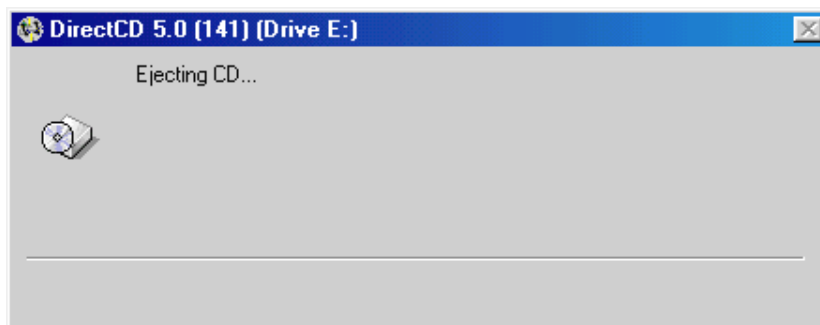
EJECTING AND FINISHING CD-R DISC.

AFTER PRESSING THE **EJECT BUTTON** ON THE CD-RW DRIVE, THE FOLLOWING SCREEN APPEARS.

Writing of video into CD-R from buffer is in progress.



THEN, THE PROGRESS BOX APPEARS.



The CD-R with image recorded is ejected, and ready for viewing in any PC with CD ROM drive installed.

5. Viewing of CD-R evidence in other PC

- ◆ Insert the CD-R in the CD-ROM of any PC supporting Windows.
- ◆ The Adder Viewer 2000 will be automatically released.
- ◆ If not, go to the directory CD-ROM:\Viewer2000\ and run the "Viewer2000.exe".
- ◆ Press "Go Get It" on the main screen of Viewer 2000.
- ◆ Select the directory \Captured Image\... and click the selected hour of video.
- ◆ Follow the normal procedure of Viewer 2000 mentioned on this manual.

Manufacturer's Disclaimer Statement

The information in this document is subject to change without notice and does not represent a commitment on the part of the vendor. No warranty or representation, either expressed or implied, is made with respect to the quality, accuracy or fitness for any particular purpose of this document. The manufacturer reserves the right to make changes to the content of this document and/or the products associated with it any time without obligation to notify any person or organization of such changes. In no event will the manufacturer be liable for direct, indirect, special, incidental or consequential damages arising out of the use or inability to use this product or documentation, even if advised of the possibility of such damages. This document contains materials protected by copyright. All rights are reserved. No part of this manual may be reproduced or transmitted in any form, by any means or for any purpose without expressed written consent of its authors. Product names appearing in this document are mentioned of identification purposes only. All trademarks, product names or brand names preparing in this document are registered property of their respective owners.

Trademarks

- ◆ ADDER DVR and its logo are registered trademarks of Adder Technology Ltd.

Copyright © 2002 by Adder Technology Ltd.

